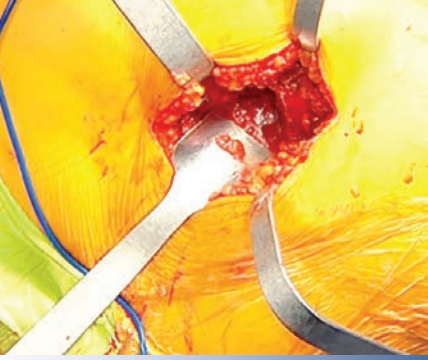


Dorr Hip Instruments

Designed by Lawrence D. Dorr, MD



PRODUCT NO'S:

1	D6105 [Dorr Curved Hohmann Acetabular] Blade Width: 18,5 mm Overall Length: 14" (35,6 cm) Depth from Handle: 4.5" (11,4 cm)
2	D6108 [Dorr Narrow Bent Acetabular—Long] Overall Length: 14.75" (37,5 cm) Depth from Handle: 6" (15,2 cm) Blade Width: 12,6 mm
3	D6110 [Dorr Narrow Bent Acetabular] Overall Length: 15" (38,1 cm) Depth from Handle: 4.75" (12,1 cm) Blade Width at Widest: 12 mm
4	D6112 [Dorr Bent Hohmann Acetabular] Overall Length: 14.5" (36,9 cm) Depth from Handle: 6" (15,2 cm) Blade Width: 21 mm

Dorr Curved Hohmann Acetabular Retractor

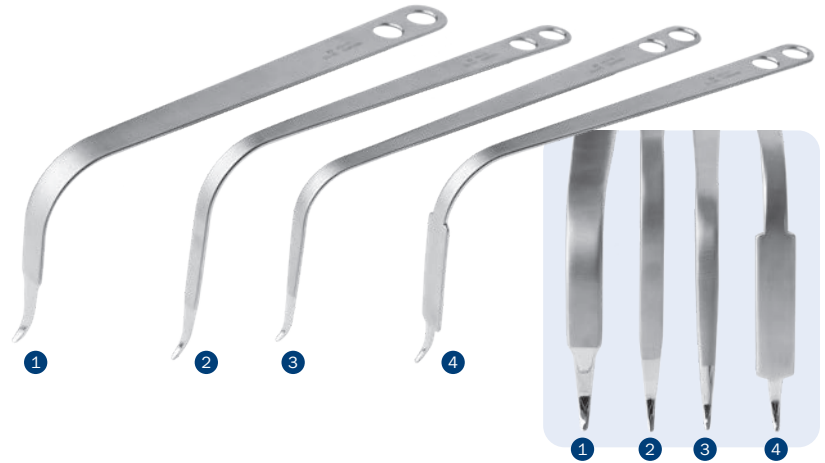
Placed over the top of the piriformis, helps retract the gluteus medius.

Dorr Narrow Bent Acetabular Retractors

Retracts the gluteus maximus off the trochanter and exposes the back of the greater trochanter. The long version is used with larger patients.

Dorr Bent Hohmann Acetabular Retractor

Placed between the capsule and outer external oblique muscle to protect medial circumflex vessels. The tip engages the condyloid notch bone (teardrop). Helps retract soft tissues during acetabular exposure.



PRODUCT NO'S:

5	D6106 [Dorr Curved Blade Bent Hohmann] Overall Length: 13.5" (34,3 cm) Depth from Handle: 4.5" (11,4 cm) Blade Width: 40 mm
6	D6107 [Dorr Curved Blade Double Bent Hohmann] Overall Length: 8.5" (21,6 cm) Depth from Handle: 5" (12,7 cm) Blade Width: 25 mm
7	D6114 [Upward Double Bent Hohmann] Overall Length: 14" (35,6 cm) Depth from Flat Part of Handle: 5.5" (14 cm) Blade Width: 20,5 mm

Dorr Curved Blade Bent Hohmann Retractors

Used for both femoral exposure—placed around the femoral neck or beneath the top of the femoral head—and acetabular exposure—posterior superior of the acetabulum.

Upward Double Bent Hohmann Retractor

Tapped into the ilium to help retract the femur for acetabular exposure.

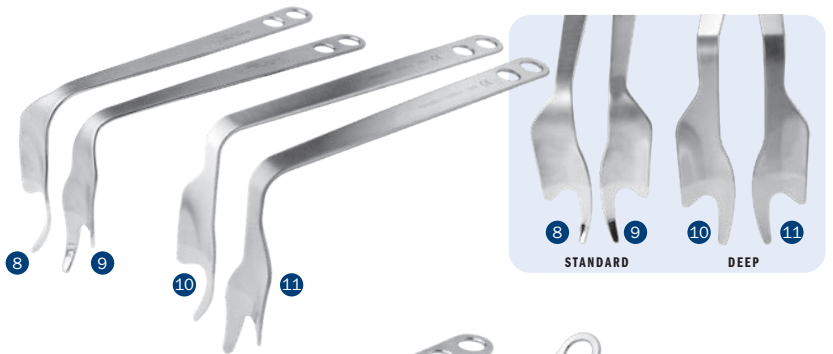


PRODUCT NO'S:

8	D6109-L [Dorr Posterior Capsule and Sciatic Nerve Protection Retractor—Left] Overall Length: 14" (35,6 cm) Depth from Handle: 6" (15,2 cm) Blade Width at Widest: 44 mm
9	D6109-R [Dorr Posterior Capsule and Sciatic Nerve Protection Retractor—Right] Overall Length: 14" (35,6 cm) Depth from Handle: 6" (15,2 cm) Blade Width at Widest: 44 mm
10	D6115-L [Dorr DEEP Posterior Capsular and Sciatic Nerve Prot. Retr.—Left] Overall Length: 14.75" (37,5 cm) Depth from Handle: 7.25" (18,4 cm) Blade Width at Widest: 48 mm
11	D6115-R [Dorr DEEP Posterior Capsular and Sciatic Nerve Prot. Retr.—Right] Overall Length: 14.75" (37,5 cm) Depth from Handle: 7.25" (18,4 cm) Blade Width at Widest: 48 mm

Dorr Posterior Capsule and Sciatic Nerve Protection Retractors

Sits on the outer rim of the posterior inferior ilium to retract the posterior capsule for acetabular exposure and help to protect the sciatic nerve.



PRODUCT NO'S:

12	D6111 [Dorr Wide Femoral Neck Elevator] Overall Length: 15" (38,1 cm) Depth from Handle: 2" (5,1 cm) Blade Width at Widest: 45 mm
13	D6113 [Dorr Narrow Femoral Neck Elevator] Overall Length: 13.75" (34,9 cm) Depth from Handle: 2.25" (5,7 cm) Blade Width: 25 mm

Dorr Femoral Neck Elevators

Placed under the proximal femur to help expose the femoral head. The wide version is useful with large patients, while the narrow is useful when broaching or when the implant is in place.



www.innomed.net

FREE TRIAL ON MOST INSTRUMENTS

INNOMEDI 

ISO 13485:2016



103 Estus Drive, Savannah, GA 31404
info@innomed.net

912.236.0000 Phone
912.236.7766 Fax

Innomed-Europe Tel. +41 41 740 67 74
info@innomed-europe.com

1.800.548.2362

© 2023 Innomed, Inc.