

# Bozeman Direct Anterior THA Femoral Elevator

Designed by Daniel M. Gannon, MD

*Designed to elevate the femur anteriorly, providing exposure to allow broaching of the femoral canal and final placement of the femoral component, during direct anterior approach THA*

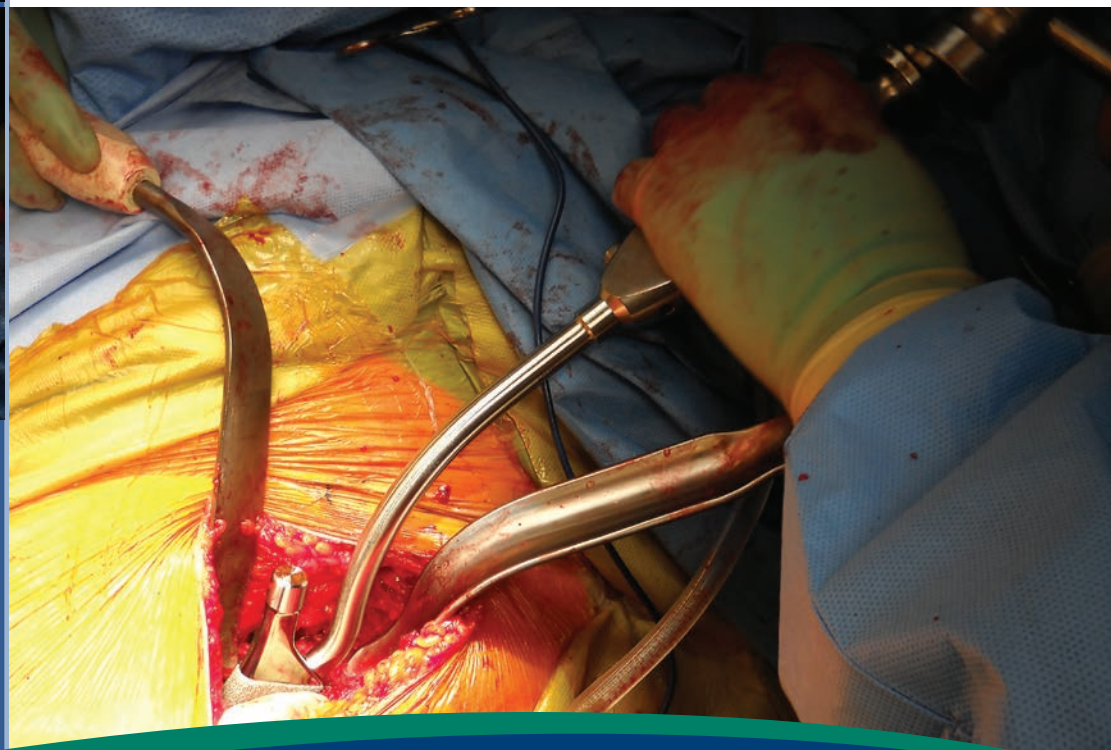
Helps to retract the TFL muscle out of the way, and provides surface area for the fulcrum effect, helping to reduce pressure on the muscle. Narrow design is helpful in minimally invasive surgery.

The flared end joins the prongs to help maintain soft tissue retraction away from the broach teeth, while the two prong design helps placement lateral to the tip of the greater trochanter and elevates the femur.



**PRODUCT NO'S:**

<b>6144 [Small]</b> Overall Length: 11.5" (29.2 cm) Blade Neck Width: 26.1 mm Blade Flared End Width: 30.1 mm	<b>6146 [Medium]</b> Overall Length: 13.5" (34.3 cm) Blade Neck Width: 29.8 mm Blade Flared End Width: 34.7 mm	<b>6145 [Large]</b> Overall Length: 15.5" (39.4 cm) Blade Neck Width: 33.6 mm Blade Flared End Width: 39.3 mm
--	---	--



ISO 13485:2016

**FREE TRIAL ON MOST INSTRUMENTS**

Scan to  
Launch Our  
Website



**INNOMED**



103 Estus Drive, Savannah, GA 31404  
www.innomed.net info@innomed.net

912.236.0000 Phone  
912.236.7766 Fax

Innomed-Europe Tel. +41 41 740 67 74  
Fax +41 41 740 67 71

**1.800.548.2362**

© 2019 Innomed, Inc.