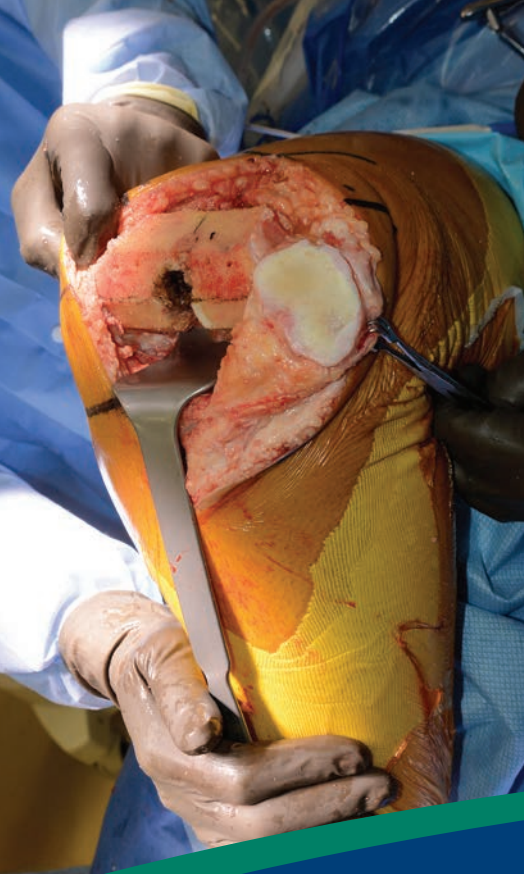
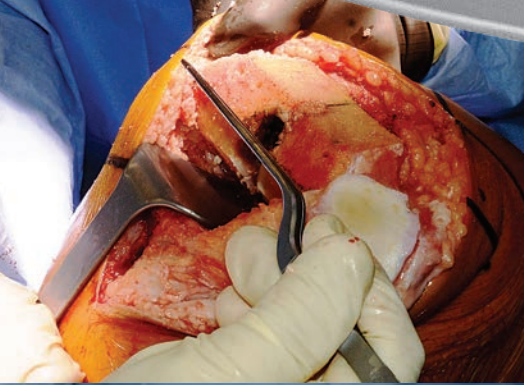


# Booth Knee Retractor

Designed by Robert E. Booth, Jr., MD

*Designed to help protect the tibial surface and to tighten the collateral ligaments and to help assess the rotation of the femur*



**PRODUCT NO:**

6580

Overall Length: 11.75" (29,8 cm)

Handle Length: 10.5" (26,7 cm)

Blade Depth: 2.75" (7 cm)

Blade Width: 2" (5,1 cm)



Scan to  
Launch Our  
Website



ISO 13485:2016

**FREE TRIAL ON MOST INSTRUMENTS**



103 Estus Drive, Savannah, GA 31404  
www.innomed.net info@innomed.net

912.236.0000 Phone  
912.236.7766 Fax

Innomed-Europe Tel. +41 41 740 67 74  
Fax +41 41 740 67 71

**INNOMED** 

**1.800.548.2362**