

Universal Bone Grafting/Impacting Forceps

Designed by J. A. Amis, MD

Bone graft can be grasped, placed & impacted without changing hands or instruments

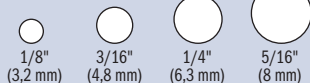
The forceps are designed with grasping ends for delivery of bone graft. When the graft is in place, the forceps are closed, which forms the ends into an impacting punch. A striking platform is attached to the end of the forceps for tapping and tamping the graft. Four end diameters are available in two lengths.

When the forceps are closed, they form into an impacting punch

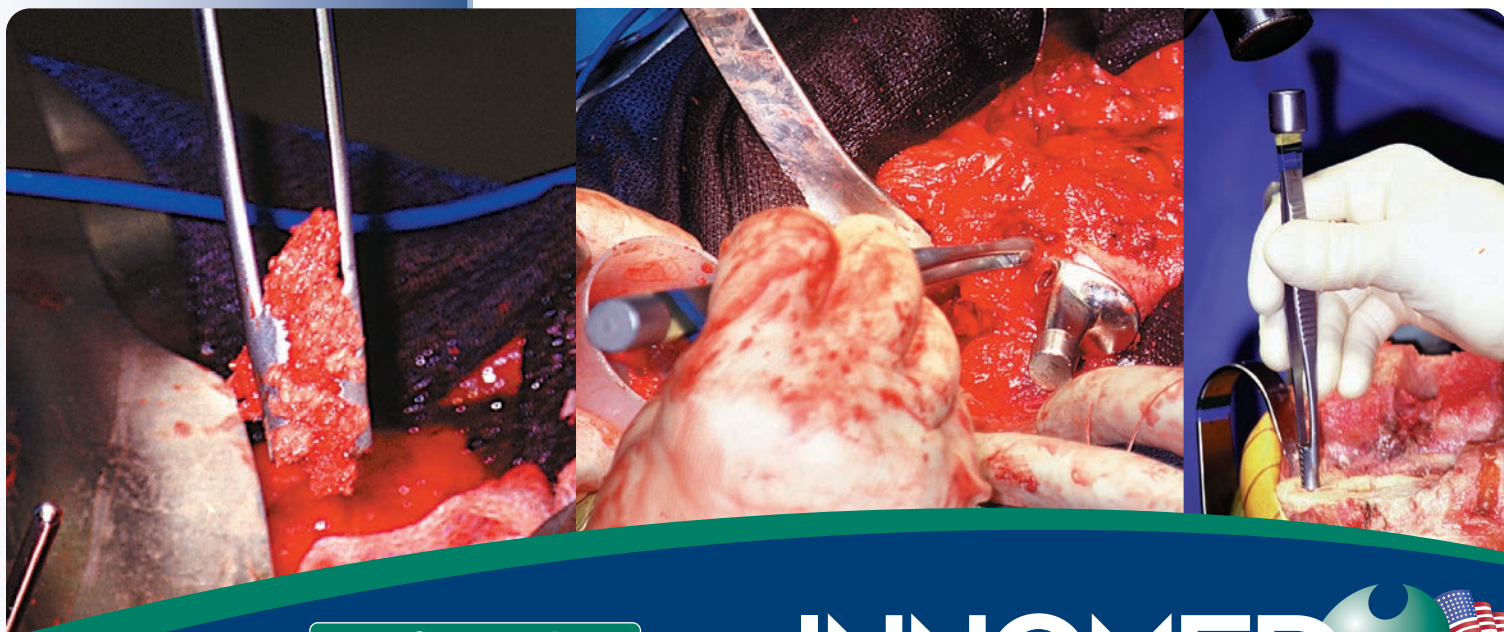


MADE EXCLUSIVELY
FOR INNOMED IN
GERMANY

PRODUCT NO'S:			
Short: 6" (15,2 cm) Length		Long: 10" (25,4 cm) Length	
5010-01	1/8" (3,2 mm) Diameter End	5050-01	1/8" (3,2 mm) Diameter End
5010-02	3/16" (4,8 mm) Diameter End	5050-02	3/16" (4,8 mm) Diameter End
5010-03	1/4" (6,3 mm) Diameter End	5050-03	1/4" (6,3 mm) Diameter End
5010-04	5/16" (8 mm) Diameter End	5050-04	5/16" (8 mm) Diameter End



Diameter ends at actual size (closed forceps)



www.innomed.net

ISO 13485:2016

FREE TRIAL ON MOST INSTRUMENTS

INNOMED



103 Estus Drive, Savannah, GA 31404
info@innomed.net

912.236.0000 Phone
912.236.7766 Fax

Innomed-Europe Tel. +41 41 740 67 74
info@innomed-europe.com

1.800.548.2362

© 2023 Innomed, Inc.