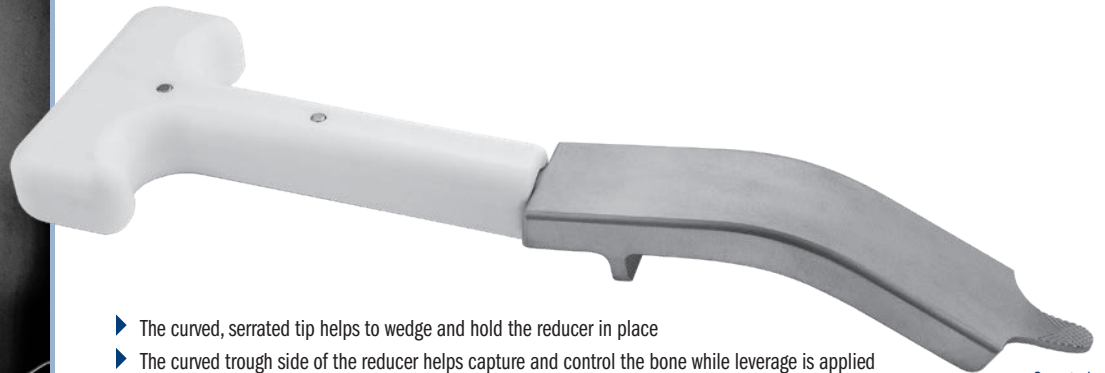


# AK Fracture Reducer

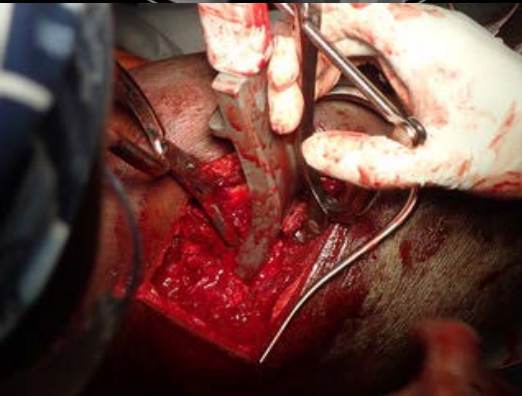
Designed by Byron McCord, MD

*Designed to help reduce long bone fractures of the femur and tibia, especially helpful with shortened long bone fractures due to young, strong musculature in acute trauma, or neglected fractures due to overriding circumstances or late referral*

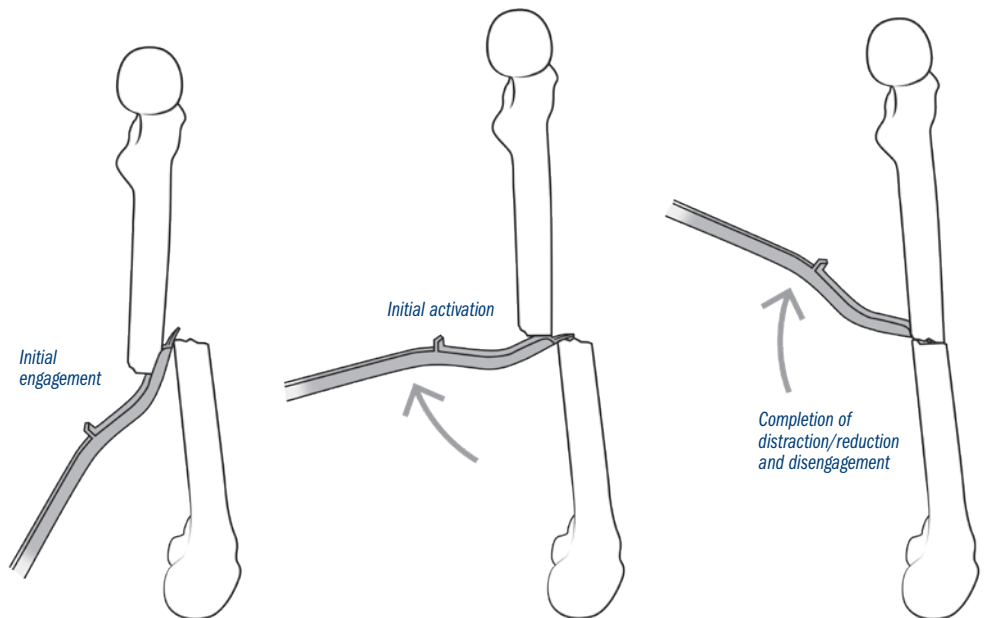
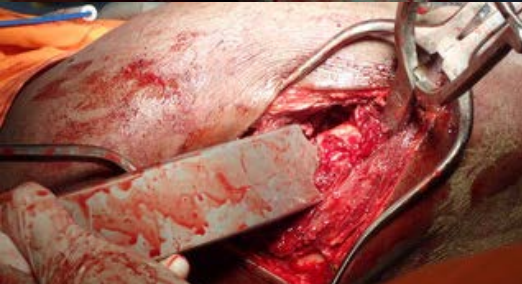


- ▶ The curved, serrated tip helps to wedge and hold the reducer in place
- ▶ The curved trough side of the reducer helps capture and control the bone while leverage is applied
- ▶ Once in place, by pushing on the T-handle, the surgeon uses the reducer to help move the bones into alignment for plating or rodding

Serrated Tip



**PRODUCT NO:**  
3870  
Overall Length: 12.5" (31,8 cm)  
Blade Width: 1.5" (3,8 cm)



ISO 13485:2016

FREE TRIAL ON MOST INSTRUMENTS

Scan to Launch Our Website



**INNOMED**



103 Estus Drive, Savannah, GA 31404  
www.innomed.net info@innomed.net

912.236.0000 Phone  
912.236.7766 Fax

Innomed-Europe Tel. +41 41 740 67 74  
Fax +41 41 740 67 71

1.800.548.2362